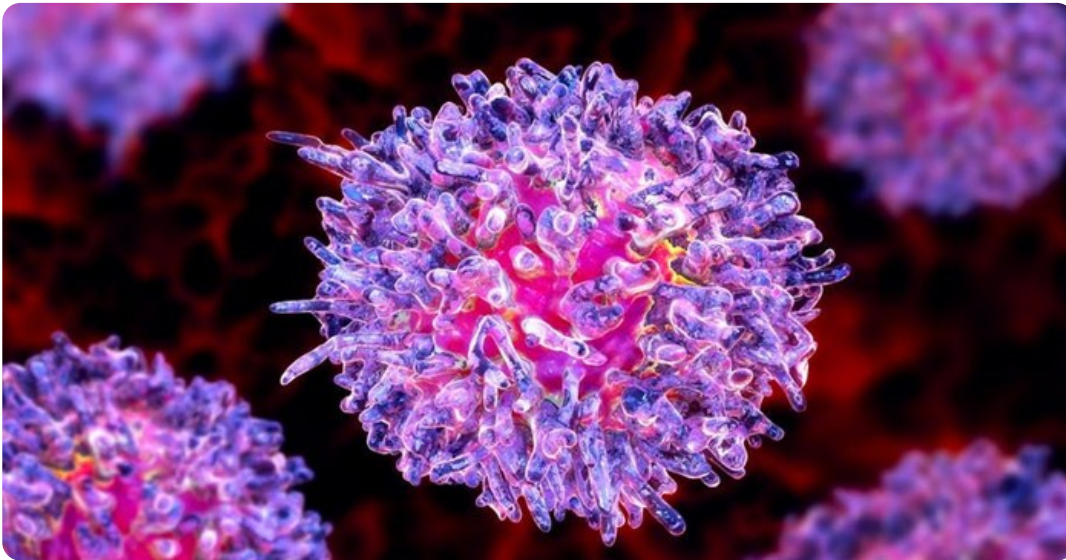


Cancer treatment: study finds targeting nearby 'normal' cells could improve survival rates

Cancer of the immune system, called [lymphoma or leukaemia](#), generally affects the entire body's bone marrow and lymph nodes. Because these types of cancers are so widespread, surgery is useful, so patients are usually treated with [chemotherapy](#). Although these treatments have [become significantly better](#) in the past ten years, lymphoma and chronic leukaemia often come back months or years after treatment.

By [Ingo Ringshausen](#) 17 Jan 2020



A leukemia cell. Kateryna Kon/ Shutterstock

Effective treatment options for these types of cancer become increasingly limited over time as tumours become resistant to chemotherapy after several rounds of treatment. For [most patients](#), a cure is out of reach, so the goal of treatment is instead to control the cancer for as long as possible. There's a huge need to improve therapies that can eliminate cells that are resistant to chemotherapy and prevent the disease from reoccurring.

However, my colleagues and I recently identified a new achilles heel of blood cancers. [Our research](#) found that treating the normal cells near to the cancer cells with a type of drug known as [small molecule inhibitors](#) significantly improved the effects of a broad range of chemotherapies.

In fact, in one test, this combination therapy extended the length of survival over 90% longer than using chemotherapy alone. This shows that cancer cells which would normally have resisted and survived chemotherapy, could now be eliminated from the body. Not only does this give patients a new kind of treatment, it also has the potential to cure patients who have to live with the disease for the rest of their lives.

Re-purposing treatments

Like with any living organism, cancer cells don't like to live in isolation. They communicate with other cells as part of a larger system, known as the [microenvironment](#). By communicating with nearby cells, cancer cells receive a [constant supply of nourishment](#) in the form of anchorage proteins, secreted growth factors, and metabolites produced by the cancer's neighbouring, normal cells. These normal cells, known as "stroma",

are an [essential component of most cancers](#) because they support tumour growth and survival. Without nourishment from stroma, cancer cells usually die.

Researchers have often wondered what effect isolating cancer cells from neighbouring stroma cells would have on cancer treatment. But the biggest challenge researchers faced was knowing what cells in the microenvironment to target and how to tailor treatments to these cells.

In a previous study, we found that lymphoma and leukaemia cells actually cause inflammation in stroma cells and that these cells also produce a protein, called [kinase C \(PKC\)-beta](#), after coming in contact with cancer cells. We've now found that this protein causes resistance to chemotherapy in cancer cells.

But we also found that when a stroma cell's genes made it unable to produce this protein, it developed resistance to lymphoma and leukaemia. Knowing the role that this protein plays gives us a way of interfering in the communication that takes place between cancer and stroma cells – effectively cutting the lifeline for cancer cells, and ideally enhancing the effects of cancer therapies.



Luckily, drugs that block the function of the PKC protein have already been developed. These weren't considered to be a useful cancer treatment after clinical trial failures. Part of the reason for this failure is because these drugs were designed to kill cancer cells directly – which was [shown to be ineffective](#).

But as our team showed, re-purposing these drugs to directly target stroma cells next to tumours – not the cancer cells – makes cancer cells more vulnerable to chemotherapy. Simultaneously, targeting cancer cells with chemotherapy and stroma cells with PKC-inhibitors is better than using either treatment alone. This “double strike” on immune cancers has the potential to significantly enhance current treatments and extend life expectancy for many patients.

In our study, the positive effects of PKC-inhibitors were seen in combination with many different types of chemotherapy – even newer medicines. Using this double strike approach was beneficial for not just one, but many different types of leukaemia and lymphomas, including [Chronic lymphocytic leukaemia](#), [Acute](#)

[lymphoblastic leukaemia](#), and [Mantle cell lymphoma](#).

This new treatment method might benefit hundreds of thousands of people currently diagnosed who are under observation or treatment. If these results can be replicated in further trials, it could become a new backbone for blood cancer therapy.

This article is republished from [The Conversation](#) under a Creative Commons license. Read the [original article](#).

ABOUT THE AUTHOR

Ingo Ringshausen, clinician scientist and consultant haematologist, *University of Cambridge*

For more, visit: <https://www.bizcommunity.com>