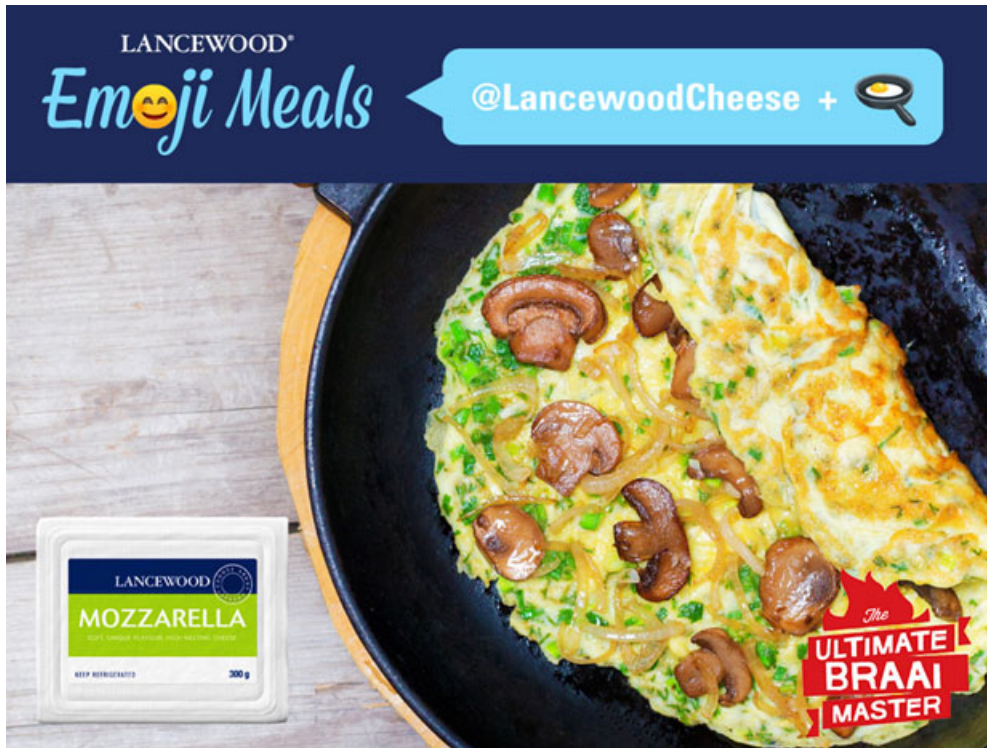


# Lancewood adds original flavour to *Ultimate Braai Master* cooking with Emoji Meals

Issued by [M&C Saatchi Abel](#)

12 Apr 2017

As one of South Africa's most beloved cheese brands, Lancewood® is a key ingredient in that most revered of local pastimes: the braai. It was a natural step, therefore, for Lancewood® to sponsor the popular reality TV series, *Ultimate Braai Master*, as it entered its fifth season.



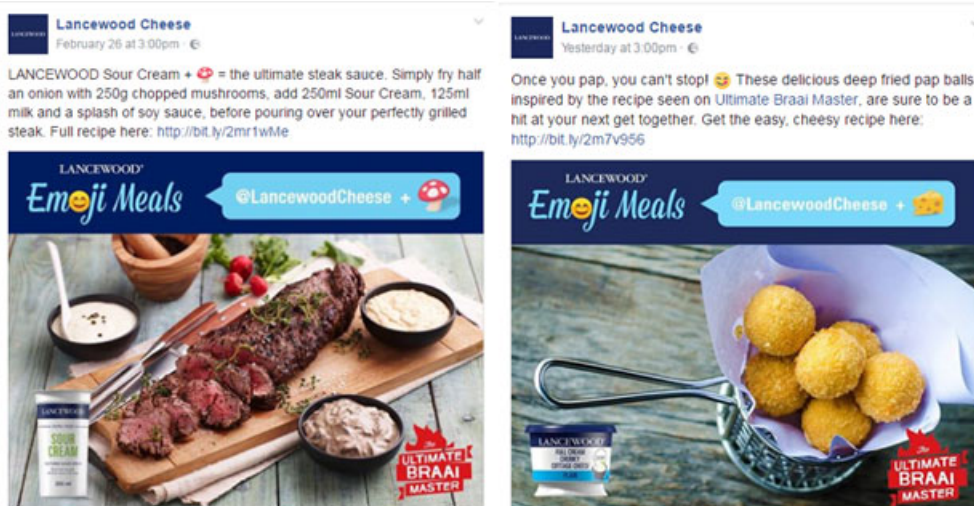
Beyond its support, however, Lancewood® wanted to introduce a new and interactive element to the viewing experience for *Ultimate Braai Master* fans. Their solution came in the form of Emoji Meals – a social media tool powered by a bot that takes the *Ultimate Braai Master* viewing experience to a different level of delicious. Lancewood® partnered with advertising agency M&C Saatchi Abel CT to execute what was a first for the brand, and a pioneering use of emerging digital tools.

“We needed a mechanism that would allow the brand to not only engage its strong following on social media, but to also provide something entirely new and immediately relevant to this audience – at a specific touchpoint,” says Gordon Ray, executive creative director at M&C Saatchi Abel. “The combination of great content with a smart social media platform provided the perfect solution.”



By simply sending a food emoji to Lancewood®'s Facebook page via private message, the Lancewood® bot instantly responds with an interesting recipe or practical tip related to the emoji.

For example, Clarissa\* sent the brand a strawberry emoji and the bot responded with a recipe for fruit cheese salad with strawberry vinaigrette – a completely different and unexpected twist on the traditional braai salad! So by harnessing the power of real-time social media engagement to provide relevant and original content to fans, Lancewood® instantly turned the *Ultimate Braai Master* viewing experience into a far more dynamic and engaging event.



According to Shereen Anderhold, Marketing Manager at Lancewood®, the response from the Lancewood® Facebook community has been sensational. About 2,002 unique users have already tried out the Lancewood® Emoji Meals bot, and approximately 165,715 interactions have taken place. She notes that over a million viewers have already tuned in for the second episode.

“Given that people are inundated with marketing messages on social media today, and particularly on Facebook, Lancewood® Emoji Meals allowed the brand to cut right through this clutter,” adds Ray. “For many South Africans, food is a passion – and we found a way for Lancewood® to become an integral and very tangible part of an activity that South Africans love and cherish.”

For more information on the Lancewood® Emoji Meal bot, visit the [Lancewood Cheese Facebook page](#).

▪ **M&C Saatchi Group South Africa boosts direct marketing, loyalty and CRM offerings through Black&White**

30 Apr 2024

▪ **MTN Group appoints M&C Saatchi Abel and Group of Companies as its global marketing partner**

24 Apr 2024

▪ **Woolworths selects Connect as its media agency of choice**

16 Apr 2024

▪ **We Love Pure joins Sermo network to increase European reach**

8 Jun 2023

▪ **Razor PR wins 'Best Reputation work in EMEA' for third year running at EMEA Sabre Awards**

27 Mar 2023

#### **M&C Saatchi Abel**

**M&CSAATCHI ABEL**

It is at the heart of everything we do. From creative thinking to creative work. From how we are structured to the systems we use. Brutal Simplicity runs through the culture of every single one of our offices, all around the world.

[Profile](#) | [News](#) | [Contact](#) | [Twitter](#) | [Facebook](#) | [RSS Feed](#)

For more, visit: <https://www.bizcommunity.com>