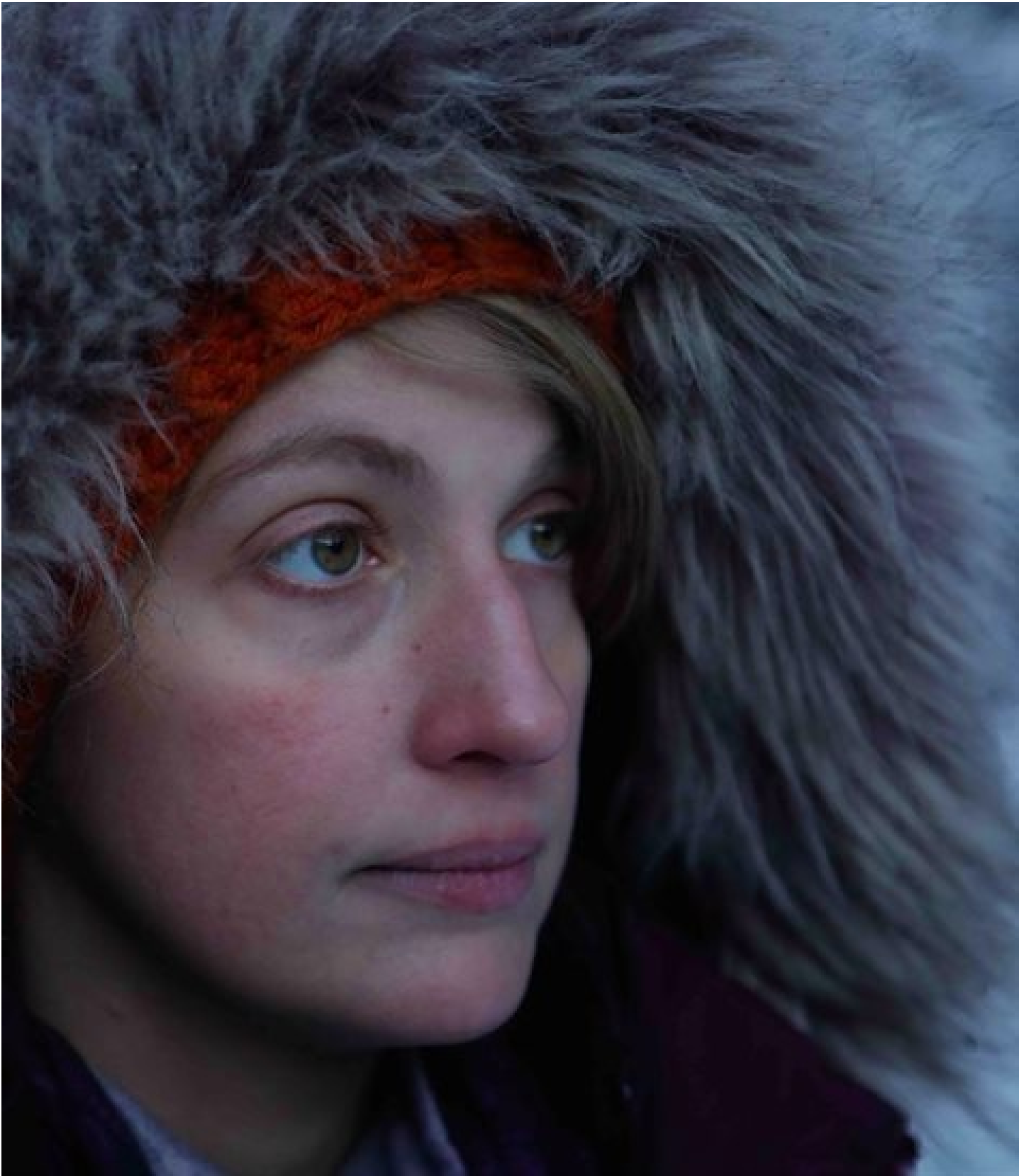


# National Geographic channels reveal summer/spring 2022 content slate

Issued by [The Walt Disney Company Africa](#)

9 Sep 2022

- National Geographic and National Geographic Wild to take viewers further this spring and summer, with premieres of several premium productions
  - Channels now broadcast in high-definition
  - Highlights include: *Team Sayari*, *America's National Parks*, *Running Wild With Bear Grylls: The Challenge*, *Europe from Above S4*, *Tut's Toxic Tomb*, *World of Flavor with Big Moe Cason*, *Gordon Ramsay: Uncharted Showdown*, and *Critter Fixers S2*
-



*Alaska The Next Generation*



*America's National Parks*

The Walt Disney Company Africa today announced the upcoming content slate for both National Geographic and National Geographic Wild for spring/summer 2022. With a promise to ignite the explorer in all of us, and with a 133-year legacy, viewers across the continent will also be able to immerse themselves in the very latest and ground-breaking storytelling in stunning high definition for the very first time, taking them further than ever before.

Featuring the best and brightest scientists, explorers, photographers and filmmakers in the world, the coming months' content highlights offer something for everyone, as several new natural history series, feature documentaries, and programming stunts will showcase the wonder of the natural world, take them on exhilarating adventures and illuminate

historical figures who epitomise the strength and triumphs of humankind.



*Team Sayari*

In National Geographic's first locally produced pan-African children's production, *Team Sayari*, viewers will follow a group of young conservationists, along with Akili – an AI computer represented as a large DNA helix – as they become Africa's protectors, working from a fun and high-tech base known as Sayari basecamp. Airing each Saturday at 1pm, *Team Sayari* premieres on Saturday 24 September, and each episode promises adventures and investigative missions, visiting exciting places across Africa, meeting interesting people, sharing knowledge about the continent's biodiversity and exploring the need to become champions for conservation.

Fan-favourite survivalist Bear Grylls is back with *Running Wild With Bear Grylls: The Challenge*. Premiering on National Geographic on Wednesday 28 September at 9pm, Bear takes the daring adventures up a level by teaching celebrity guests, such as Natalie Portman, Ashton Kutcher, Simu Liu, Anthony Anderson and others, essential survival skills that they will have to master and then prove they can use in a high-stress situation.



*Europe from Above*

Viewers will enjoy a new perspective of Europe through the changing seasons across a year in Belgium, Bulgaria, Denmark, Romania Serbia and Scotland when Season 4 of *Europe from Above* premieres on Wednesdays at 7pm, from 28 September, revealing how tradition, engineering and natural wonders have shaped this fascinating continent, in a vibrant portrait of the region and the people who keep it alive.

In *Lost Treasures Of Arabia*, premiering Friday 28 October at 7pm, we investigate AlUla's unsolved mysteries and unravel the many dramas that played out on this ancient stage. This television special features reveals the historical heritage, exquisite natural assets and the immense legacy of art that continues to inspire future generations in this middle eastern city.



*Tut's Toxic Tomb*

King Tutankhamen, or King Tut as he is commonly known today, was relatively unknown to the world until 1922, when his tomb was discovered by Howard Carter 100 years ago. To celebrate the centennial anniversary of this remarkable find, National Geographic will premiere *Tut's Toxic Tomb* on Friday 18 and 25 November at 7pm, with library content *King Tut in Color*, on Friday 4 November at 7pm and *Tut's Treasures, The Golden Pharaoh* on Friday 11 November at 7pm, to further explore the many facets of the great Pharaoh's life and legacy.

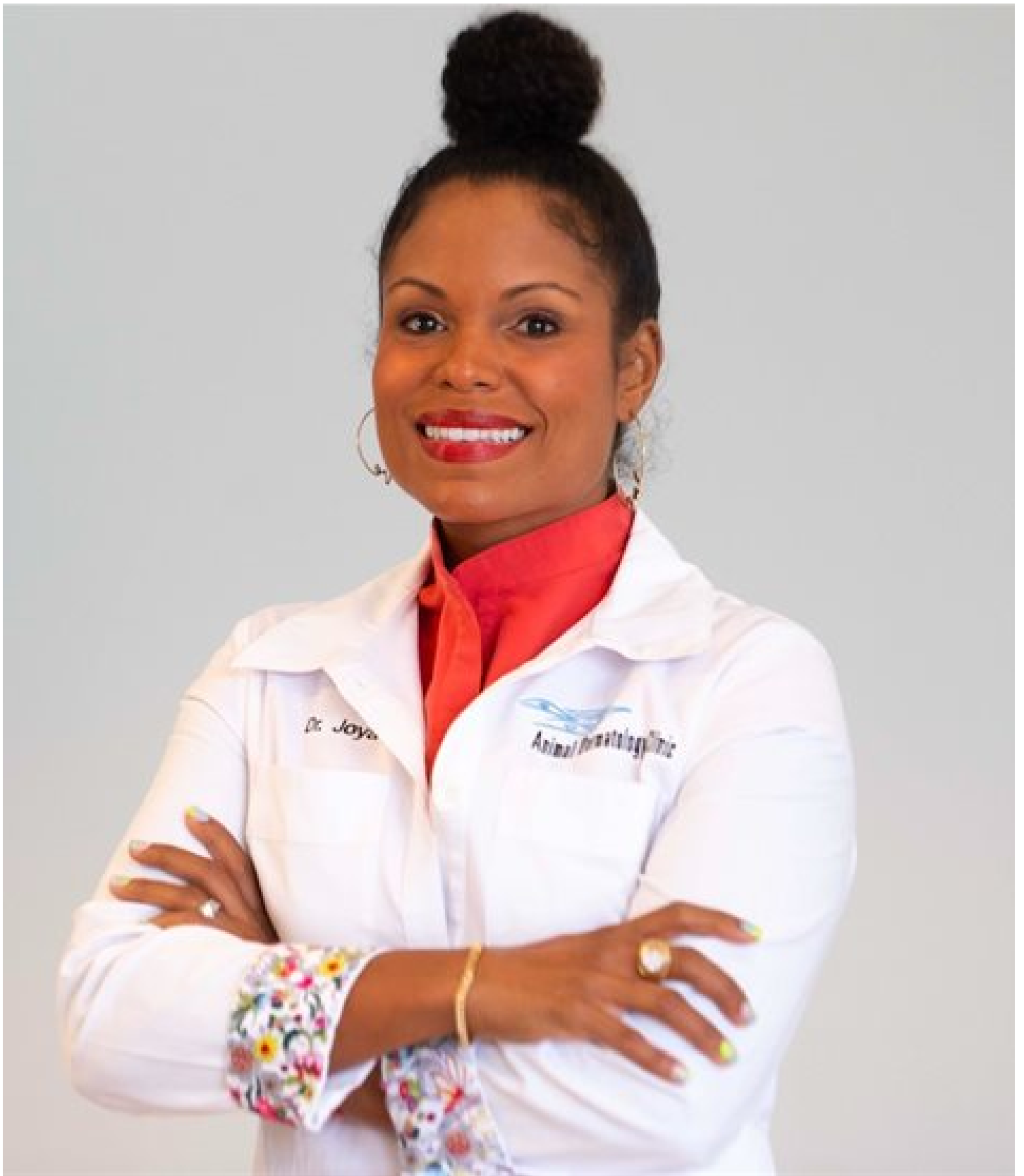
In November, two sumptuous programmes will take the adventure from the wilderness into the kitchen. In *Gordon Ramsay: Uncharted Showdown*, premiering Wednesdays at 9pm from 9 November, the multi-Michelin star chef and Ironman athlete Ramsay faces off against those closest to him. including going head-to-head with his daughter Tilly in a culinary showdown. Later that month, navy veteran Big Moe Cason leaves his culinary comforts behind and embarks on an epic journey to seek out the most mouth-watering dishes cooked over an open flame. *World Of Flavour With Big Moe Cason* premieres on Wednesdays at 9pm from 30 November, exploring the connections between American barbecue and cultures around the world.



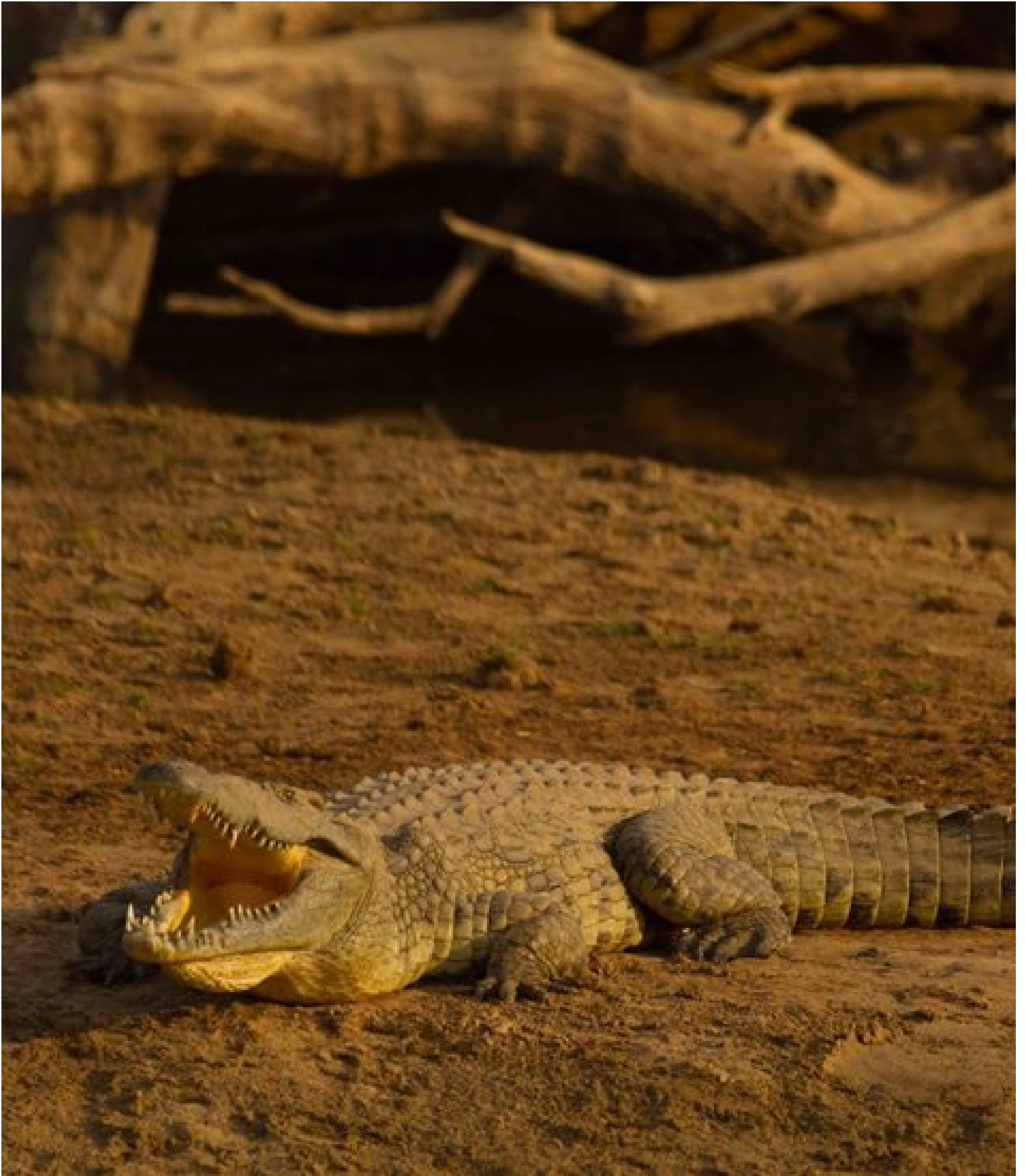
*Crittter Fixers*

Meanwhile, 100 miles south of Atlanta, Dr Hodges and Dr Ferguson are two longtime friends who own and operate the *Crittter Fixers* Veterinary Hospital. Between emergency visits to the office and farm calls throughout rural Georgia, the *Crittter Fixers* and their loving staff are constantly bombarded with unique cases only seen in the country. *Crittter Fixers* S2 premieres on Fridays at 6pm from 11 November on National Geographic Wild.

For the world's top adventure athletes, the line between triumph and tragedy is sometimes razor thin. The epic 10-part series, *Edge Of The Unknown* by Academy Award®-winning executive producers E. Chai Vasarhelyi and Jimmy Chin, will takes audiences inside the minds of pioneering adventure athletes as they recount the most consequential moments of their lives on their journey to perfect the mastery of their craft, will premiere Sundays at 9pm from 25 December on National Geographic.



*Pop goes the Vet*



*Secrets of the Crocodile*

“The exciting line up of National Geographic programming delivers on our core purpose to tell exceptional stories that ignite wonder and inspiration for people of all ages, enabling them to better understand the world and their place in it,” said Christine Service, senior vice president and general manager of The Walt Disney Company Africa. “We can’t wait to bring these wildly entertaining documentary series, feature documentary films and extraordinary natural history shows from the best storytellers in the world to viewers across the continent, and especially in HD for the very first time.”

[View programming schedules here.](#)

- **National Geographic honours WWII soldiers of colour with 2 new specials** 16 May 2024
- **Disney Jr.'s Ariel to make a splash on Disney Junior this June** 14 May 2024
- **Trafficked Underworlds with Mariana van Zeller premieres this May** 30 Apr 2024
- **Nat Geo celebrates Earth Day with ourHOME campaign** 16 Apr 2024
- **Nat Geo profiles photographers in new series** 12 Mar 2024

#### [The Walt Disney Company Africa](#)



The Walt Disney Company has been in Europe, Middle East and Africa (EMEA) for over 80 years and employs thousands across the region.

[Profile](#) | [News](#) | [Contact](#) | [Facebook](#) | [RSS Feed](#)

For more, visit: <https://www.bizcommunity.com>