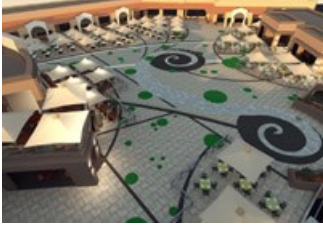


# Mall extensions upgrade regional shopping areas

Anaprop Property Management has announced the opening of Phase 2 of Mall@Carnival on 22 September 2011 and the launch of the Piazza area at Mall@Reds during October 2011, as part of its regional shopping mall expansion.



Mall@Carnival, situated at the intersection of Airport and Heidelberg Roads and the N17 and R23 highways in the East Rand, is a visible and accessible centre servicing Brakpan, Springs, Heidelberg, Nigel, Benoni, Boksburg, the surrounding townships, and Mpumalanga towns such as Bethal, Kinross, Evander, Secunda and Trichardt since the recent opening of the new section of the N17.

Since its opening in October 2005, it has served as a community driven centre. Phase 2 will introduce a full sized Dis-Chem, Game, Checkers Hyper, Hi-Fi Corp, seven Ster-Kinekor cinemas and add a wide array of leading national retail brands and entertainment to the established Pick n Pay, Woolworths and Edgars.

Mall@Reds, situated in Rooihuiskraal in Centurion, has been trading since 2003. The launch of the Piazza area, situated on the north-west elevation of the mall between the current Mochacinos and Greenfields entrances will add restaurants to the current tenant mix. With outside seating, water features and trees creating a relaxed yet sociable vibe and its convenient location to the movies, it will provide an extensive tenant mix, value for money, security and structured, free parking.

For more, visit: <https://www.bizcommunity.com>