

New MRI increases productivity at Rondebosch Medical Centre

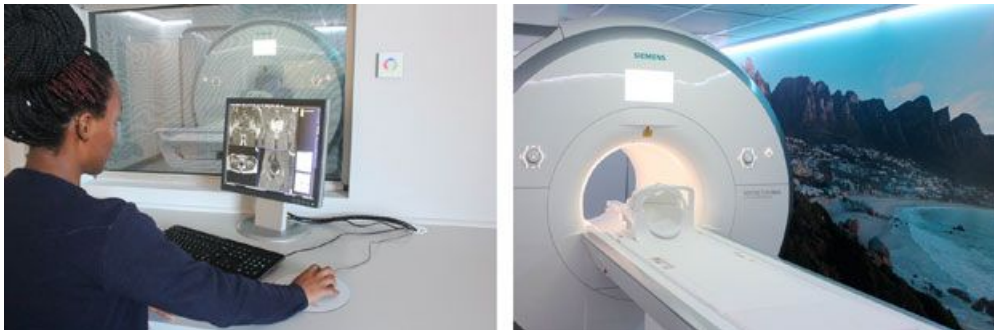
Issued by [Morton & Partners](#)

18 May 2018

Morton & Partners continues to expand its patient-centered clinical services at Rondebosch Medical Centre with the installation of its new magnetic resonance imaging (MRI) machine. This machine is the newest addition to the Morton & Partners work fleet and will increase the availability for MRI examinations in the surrounding area.



Purchased from Siemens®, the 1.5T MAGNETOM Aera performs one of the highest-quality MRI exams available today. Its ultra-short, 70cm open-bore design offers a more spacious, less claustrophobic feeling and easier access for patients with limited mobility. Additionally, the decreased noise and increased comfort means sharper images due to less anxiety-related movement.



“This new MRI enables us to offer our patients a faster, less stressful exam while giving their healthcare provider the highest-quality images in a shorter time,” said Dr Clive Sperry, Managing Partner at Morton & Partners, “Having this service at the practice offers our healthcare community in Rondebosch and surrounding areas greater access to cutting-edge technology for even better patient care.”

This new machine will allow physicians to perform extensive scans ranging from cardiac imaging to breast, prostate, neurological and specialised orthopedic scans.

For more information, please call their Centralised MRI Booking Centre at (021) 276 1253 or mribookings@morton.co.za.

Learn more about Morton & Partners Radiologists by visiting their website: www.morton.co.za.

For more, visit: <https://www.bizcommunity.com>